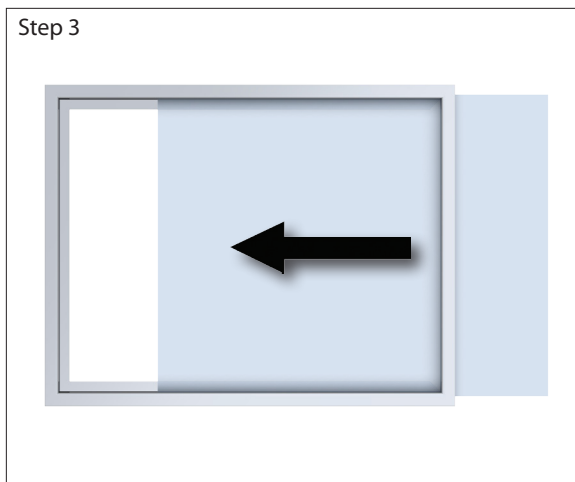
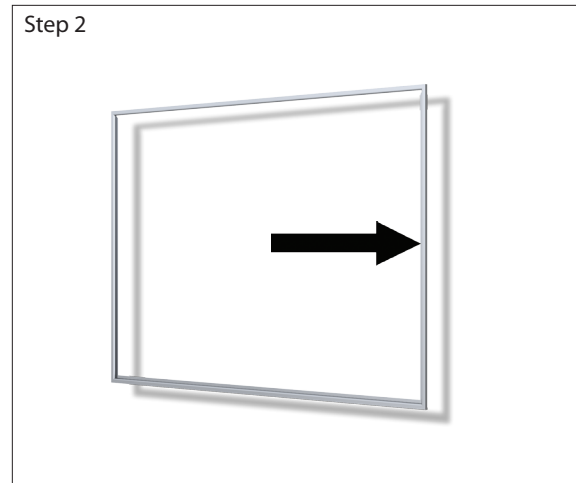
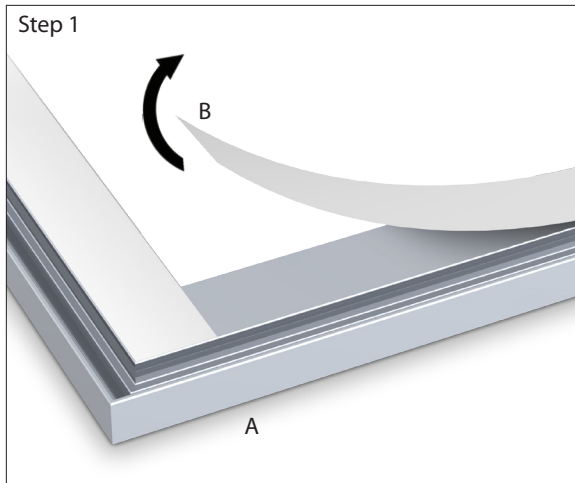


Silhouette Aluminum Trim Frame™

1. Lay frame front-side down on table (fig. A), then peel off adhesive cover from back of frame (fig. B).
2. Firmly press all edges of frame against wall to secure.
3. Insert graphic.

Applicable Products:

- OU1 - 8-1/2" x 11"
- OU2 - 11" x 14"
- OU3 - 11" x 17"
- OU4 - 14" x 22"
- OU5 - 22" x 28"
- OU6 - 24" x 36"



OU6 shown